

# Zambia National Malaria Control Programme: Enumeration Activities District Summary Report

District: **Lusaka**  
Date of last enumeration **17-Dec-08**

	<i>2007</i>	<i>2008</i>	<i>2009</i>	<i>Total</i>
<b>Enumeration results: Demography</b>				
Households (HHs)		67,157		67,157
Structures enumerated		85,002		85,002
Structures per HH enumerated		1.3		
Sleeping spaces				
Sleeping spaces per HH enumerated				
Houses with no respondents		1,244		1,244
Houses with no structure/room count		42		42
Percent of HHs enumerated (%)		0.1		
Total population		322,303		322,303
Children under age five				
Average population per HH		4.8		
<b>Enumeration results: Mosquito nets</b>				
Mosquito nets reported		48,158		48,158
Mosquito nets per HH		0.7		
Mosquito nets per sleeping space				
Percent of HHs with at least 1 net (%)		47.6		
<b>Enumeration results: Indoor residual spraying (IRS)</b>				
Rooms enumerated		190,244		190,244
Rooms with plastered surfaces		110,352		110,352
Households sprayed < 12 months		14,360		14,360
Percent HHs sprayed < 12 months (%)		21.8		
Average numbers months ago HH sprayed		1.7		
<b>Enumeration results: Household received IEC materials</b>				
Percent HHs receiving IRS brochure (%)				
Percent HHs receiving ITN brochure (%)				
<b>Enumeration results: Community health worker (CHW) visits</b>				
CHW Visit				
Percent HHs reporting visits by CHW (%)				

Figure 1: Household enumeration activities by mosquito net availability

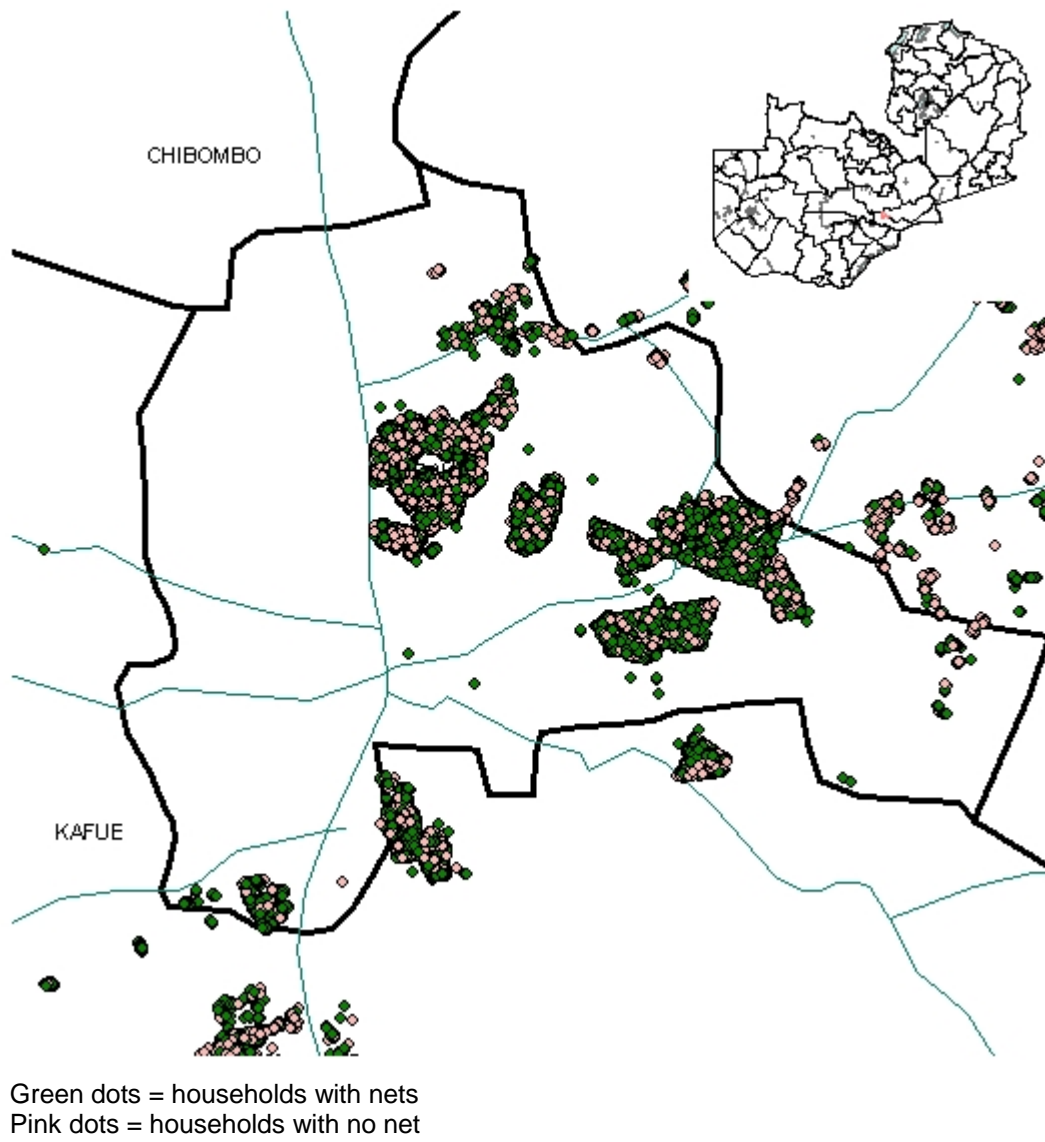
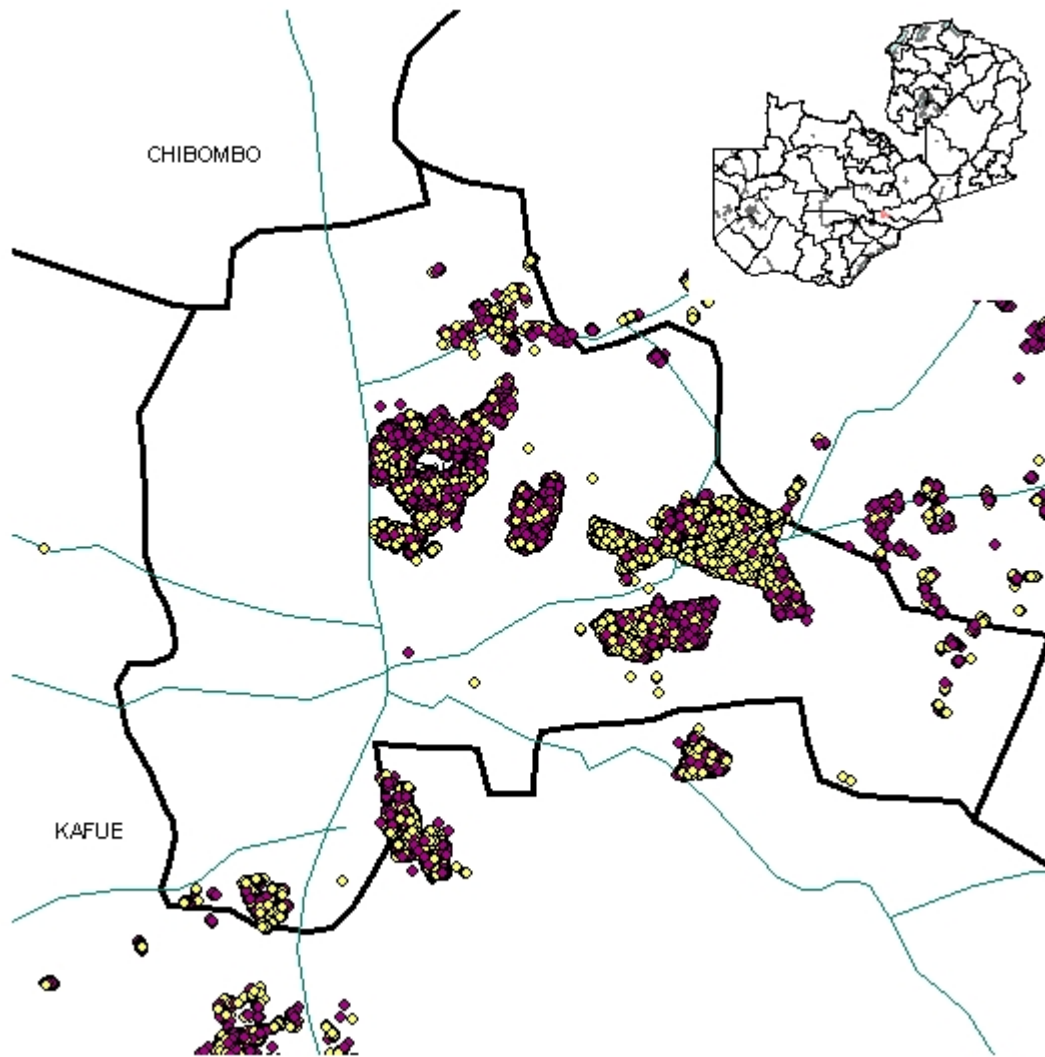
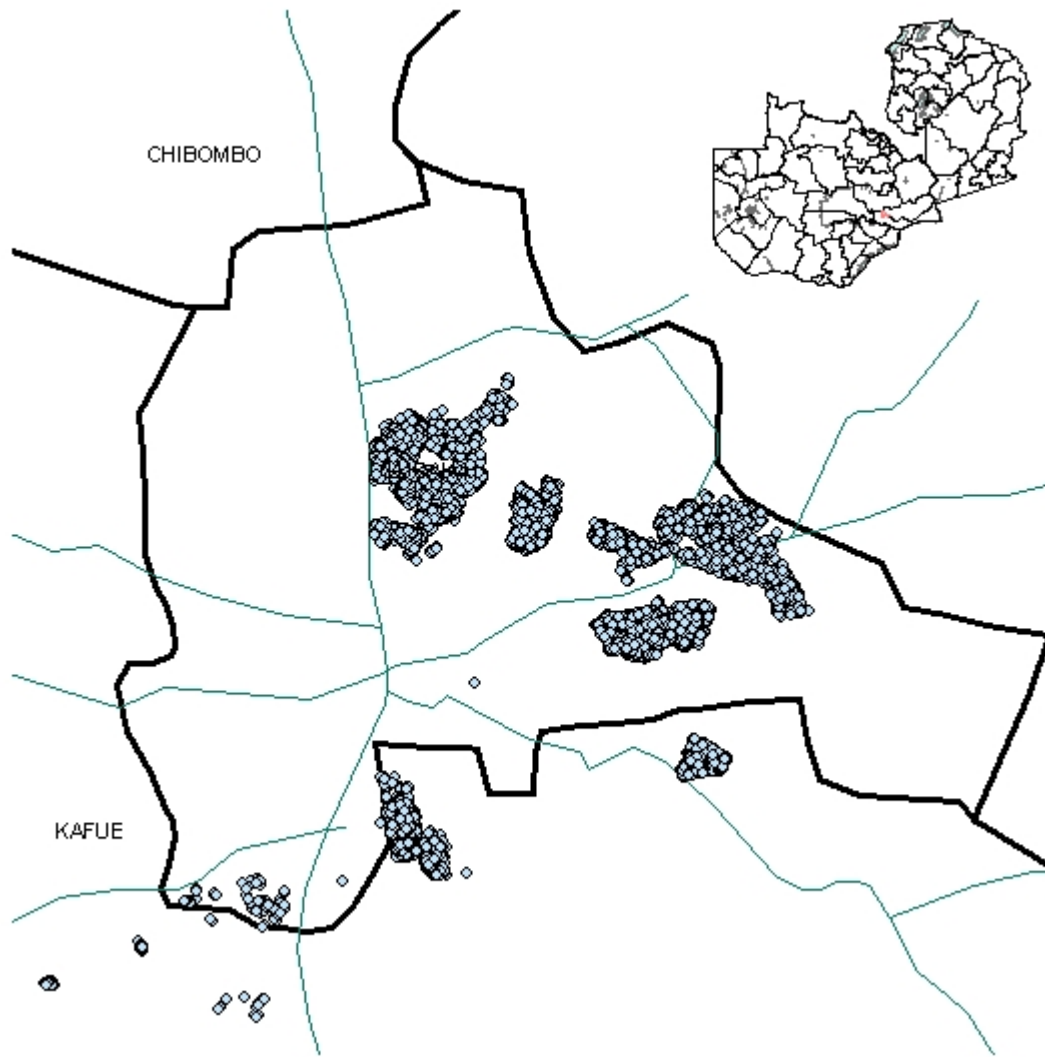


Figure 2: Household enumeration activities by plastered wall surfaces



Yellow dots = households with any plastered wall surfaces  
Purple dots = households with no plastered wall surfaces

Figure 3: Households enumeration reported sprayed in the previous 12 months



Blue dots = houses reported sprayed within the previous 12 months

## Indicator definitions

---

### *Enumeration results: Demography*

#### **Households (HHs)**

The total number of enumerated households.

#### **Structures enumerated**

The total number of structures reported for each household.

#### **Structures per HH enumerated**

The average number of structures enumerated per household.

#### **Sleeping spaces**

The total number of sleeping spaces reported by the household respondents.

#### **Sleeping spaces per HH enumerated**

The average number of sleeping spaces structures enumerated per household.

#### **Houses with no respondents**

The total number of households with no respondent or where no information on number of people living in the household was available.

#### **Houses with no structure/room count**

The total number of households with no information on number of structures or rooms available.

#### **Percent of HHs enumerated (%)**

The percentage of total number of households with no information on number of structures or rooms was available. The denominator is the total number of enumerated households.

#### **Total population**

The total population reported among households with a respondent.

#### **Children under age five**

The total number of children under five reported living in the household among households with a respondent.

#### **Average population per HH**

The average population per household among households with a respondent.

### *Enumeration results: Mosquito nets*

#### **Mosquito nets reported**

The total number of mosquito nets reported available in households with a respondent.

#### **Mosquito nets per HH**

The average number of mosquito nets per household among households with a respondent.

#### **Mosquito nets per sleeping space**

The average number of mosquito nets available per sleeping space among households with a respondent.

### **Percent of HHs with at least 1 net (%)**

The percentage of households with at least one mosquito net among households with a respondent.

#### *Enumeration results: Indoor residual spraying (IRS)*

##### **Rooms enumerated**

The total number of rooms reported for each household.

##### **Rooms with plastered surfaces**

The total number of rooms with plastered wall surfaces reported for each household.

##### **Households sprayed < 12 months**

The total number of households reported to have been sprayed within the past 12 months among households with a respondent.

##### **Percent HHs sprayed < 12 months (%)**

The percentage of households reported to have been sprayed within the past 12 months among households with a respondent. The denominator is the total number of households with a respondent.

##### **Average numbers months ago HH sprayed**

The average number of months ago the households were reported to have been sprayed among households with a respondent.

#### *Enumeration results: Household received IEC materials*

##### **Percent HHs receiving IRS brochure (%)**

The percentage of households reporting that an IRS brochure was received among households with a respondent. The denominator is the total number of households with a respondent.

##### **Percent HHs receiving ITN brochure (%)**

The percentage of households reporting that an ITN brochure was received among households with a respondent. The denominator is the total number of households with a respondent.

#### *Enumeration results: Community health worker (CHW) visits*

##### **CHW Visit**

Households reporting a CHW has ever visited their household

##### **Percent HHs reporting visits by CHW (%)**

The percentage of households reporting a CHW has ever visited their household. The denominator is the total number of households with a respondent.