

# Zambia National Malaria Control Programme: Enumeration Activities District Summary Report

District: **Kalulushi**  
Date of last enumeration **17-Aug-07**

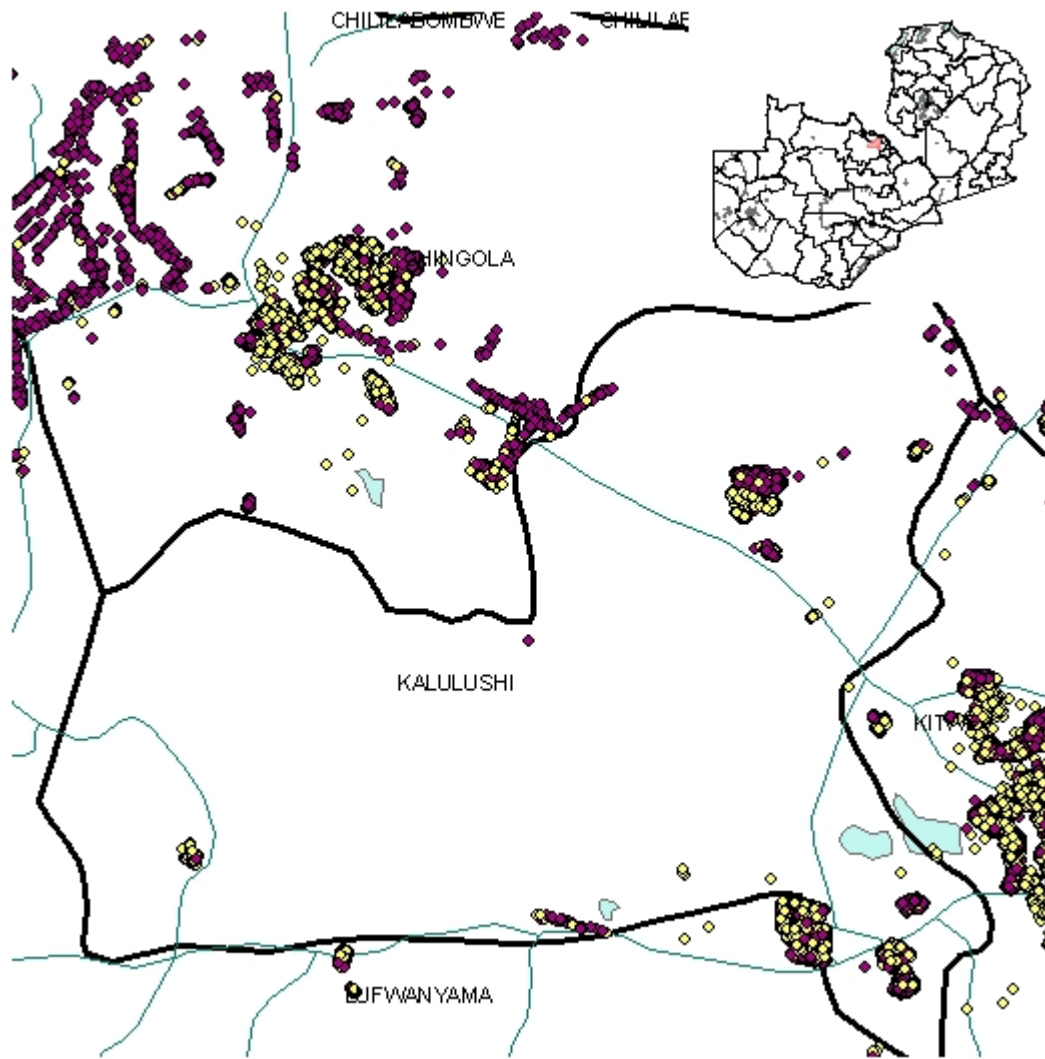
	<i>2007</i>	<i>2008</i>	<i>2009</i>	<i>Total</i>
<b>Enumeration results: Demography</b>				
Households (HHs)	10,601			10,601
Structures enumerated	16,091			16,091
Structures per HH enumerated	1.5			
Sleeping spaces				
Sleeping spaces per HH enumerated				
Houses with no respondents	1,637			1,637
Houses with no structure/room count	382			382
Percent of HHs enumerated (%)	3.6			
Total population	59,026			59,026
Children under age five				
Average population per HH	5.6			
<b>Enumeration results: Mosquito nets</b>				
Mosquito nets reported	11,083			11,083
Mosquito nets per HH	1.0			
Mosquito nets per sleeping space				
Percent of HHs with at least 1 net (%)	61.7			
<b>Enumeration results: Indoor residual spraying (IRS)</b>				
Rooms enumerated	53,233			53,233
Rooms with plastered surfaces	39,598			39,598
Households sprayed < 12 months				
Percent HHs sprayed < 12 months (%)				
Average numbers months ago HH sprayed				
<b>Enumeration results: Household received IEC materials</b>				
Percent HHs receiving IRS brochure (%)				
Percent HHs receiving ITN brochure (%)				
<b>Enumeration results: Community health worker (CHW) visits</b>				
CHW Visit				
Percent HHs reporting visits by CHW (%)				

Figure 1: Household enumeration activities by mosquito net availability



Green dots = households with nets  
Pink dots = households with no net

Figure 2: Household enumeration activities by plastered wall surfaces



Yellow dots = households with any plastered wall surfaces  
Purple dots = households with no plastered wall surfaces

## Indicator definitions

---

### *Enumeration results: Demography*

#### **Households (HHs)**

The total number of enumerated households.

#### **Structures enumerated**

The total number of structures reported for each household.

#### **Structures per HH enumerated**

The average number of structures enumerated per household.

#### **Sleeping spaces**

The total number of sleeping spaces reported by the household respondents.

#### **Sleeping spaces per HH enumerated**

The average number of sleeping spaces structures enumerated per household.

#### **Houses with no respondents**

The total number of households with no respondent or where no information on number of people living in the household was available.

#### **Houses with no structure/room count**

The total number of households with no information on number of structures or rooms available.

#### **Percent of HHs enumerated (%)**

The percentage of total number of households with no information on number of structures or rooms was available. The denominator is the total number of enumerated households.

#### **Total population**

The total population reported among households with a respondent.

#### **Children under age five**

The total number of children under five reported living in the household among households with a respondent.

#### **Average population per HH**

The average population per household among households with a respondent.

### *Enumeration results: Mosquito nets*

#### **Mosquito nets reported**

The total number of mosquito nets reported available in households with a respondent.

#### **Mosquito nets per HH**

The average number of mosquito nets per household among households with a respondent.

#### **Mosquito nets per sleeping space**

The average number of mosquito nets available per sleeping space among households with a respondent.

### **Percent of HHs with at least 1 net (%)**

The percentage of households with at least one mosquito net among households with a respondent.

#### *Enumeration results: Indoor residual spraying (IRS)*

##### **Rooms enumerated**

The total number of rooms reported for each household.

##### **Rooms with plastered surfaces**

The total number of rooms with plastered wall surfaces reported for each household.

##### **Households sprayed < 12 months**

The total number of households reported to have been sprayed within the past 12 months among households with a respondent.

##### **Percent HHs sprayed < 12 months (%)**

The percentage of households reported to have been sprayed within the past 12 months among households with a respondent. The denominator is the total number of households with a respondent.

##### **Average numbers months ago HH sprayed**

The average number of months ago the households were reported to have been sprayed among households with a respondent.

#### *Enumeration results: Household received IEC materials*

##### **Percent HHs receiving IRS brochure (%)**

The percentage of households reporting that an IRS brochure was received among households with a respondent. The denominator is the total number of households with a respondent.

##### **Percent HHs receiving ITN brochure (%)**

The percentage of households reporting that an ITN brochure was received among households with a respondent. The denominator is the total number of households with a respondent.

#### *Enumeration results: Community health worker (CHW) visits*

##### **CHW Visit**

Households reporting a CHW has ever visited their household

##### **Percent HHs reporting visits by CHW (%)**

The percentage of households reporting a CHW has ever visited their household. The denominator is the total number of households with a respondent.